

DON'T BE A BEST KEPT SECRET.

ORDER GEAR FROM THE:

ENCAP PRINT SHOP

Totes to tee's, hats,
aprons, koozies, & more.

**ENCAP's got
you covered!**

ENCAP is helping
groups across
the country boost
their brand.

(402) 616-5963

jconnor@encapomaha.org



ENCAP PRINT SHOP

WHAT IT'S ALL ABOUT
Reducing the power of poverty.

What started out as a simple idea has transformed into a fully functioning print shop that distributes gear nationwide. We are a small screen printing shop that produces brand boosting apparel and accessories to people and organizations who want to pay it forward by purchasing quality products that support a great cause. The Print Shop supports *ENCAP's mission of reducing the power of poverty in our community. JOIN US!



**The ENCAP print shop is operated by Eastern Nebraska Community Action Partnership (ENCAP).
ENCAP is a 501(c)(3) non-profit organization.*

THIS IS MARK. HE PRINTS OUR GEAR BY HAND.

THIS IS HIS STORY:



"My name is Mark, and I am 57 years old. At a very early age I started working with my hands. My dad was very mechanically inclined and passed that on to me. I built my first wooden go-cart at around 8 or 9 years old with minimal help. I bought my first car at 14 and immediately took the engine apart to see how it worked. At age 20, I got my first print job and worked at various print shops around Omaha, NE for the next 30 years.

About 10 years ago I had the chance to buy a screen printing set-up. I taught myself what I needed to know and started printing t-shirts. My life was up and down during that time. I had collected a number of tickets and had several brushes with the law. At one time I was unemployed and my utilities were way behind. I stumbled across ENCAP for help with my bill.

A couple of years ago I was in need of some counseling services and remembered ENCAP could provide that to me. As I was leaving the agency one day, the Executive Director flagged me down and asked if I had a few minutes. He had heard of my printing experience and took me upstairs to show me some equipment. "Would you know anything about this stuff?" I couldn't believe what I was seeing – these were parts of an entire commercial print shop. He saw the potential to build a job-training business, and he saw the potential in me. I started as a volunteer, putting everything back together and started to print, and ENCAP made me a full-time employee in January 2019."

GEAR DESIGN TIPS

WE SCREEN PRINT ALL GEAR BY HAND

SIMPLE, ONE AND TWO COLOR DESIGNS ARE OUR SPECIALTY.

- The Print Shop is equipped to produce one and two color logos / designs.
- We can place images on the front, back, and sleeve on apparel. These can be three different images / text.
- **Keep it simple. The more complicated the design, the more you pay, and the less recognizable your brand becomes.**
- We have access to the National Community Action logo, Huggy Heart, and Head Start logo files. If you are looking for guidance on these designs see the: *Community Action National Style Guide*.
- **All logo and design files must be high resolution JPEG or PDF images (ideally 200 dpi or higher).**
- Fonts matter. Simple universal fonts are easier to read (and print). Use one to two fonts per design.
- **For the best results, use white logos / text on darker gear. Use darker color font on lighter color gear.**
- We will mock up a proof for you so you can see what your design looks like on the gear you choose.
- We can create a custom design for a fee (see pricing sheet for details).



The Print Shop supports the mission of Eastern Nebraska Community Action Partnership (ENCAP). Get your gear here, and help reduce the power of poverty in our community.

1

EXPLORE THE GEAR

Check out the great apparel options in the catalog and determine what kind of gear you are looking for.

2

SELECT

The Print Shop can print one and two color designs. Whether it's a logo on the front, the sleeve, the back, or all three, please send us a high resolution JPEG. Need help choosing a design? We can help you! Just ask.

3

ORDER

Fill out an order form (request link to catalog from e-mail below):
jconnor@encapomaha.org
or call
(402) 616-5963

PRICING STRUCTURE:

Northeast Nebraska Community Action



SET-UP (PER SCREEN)

\$25 for Community Action Agencies

\$35 for non-Community Action organizations

CUSTOM GRAPHIC DESIGN

We can custom design graphics at a rate of \$65 per hour.

TEE SHIRTS

\$10 short sleeve

\$12 long sleeve

\$14 v-neck (women's)

\$15 baseball / 3/4 length sleeve

SWEATSHIRTS AND POLOS

\$16 Crew Neck Sweatshirt

\$18 Hooded Sweatshirt

\$20 Zip-up Hooded Sweatshirt

\$22 Performance Polo

ACCESSORIES

\$2 Koozie

\$7 Canvas Tote

\$9 Adult, 2-pocket Apron

**Add \$2 per item for full-color, two sided printing*

**DON'T SEE WHAT YOU NEED LISTED ABOVE?
LET US KNOW WHAT YOU ARE LOOKING FOR!**



CONNECT WITH US:



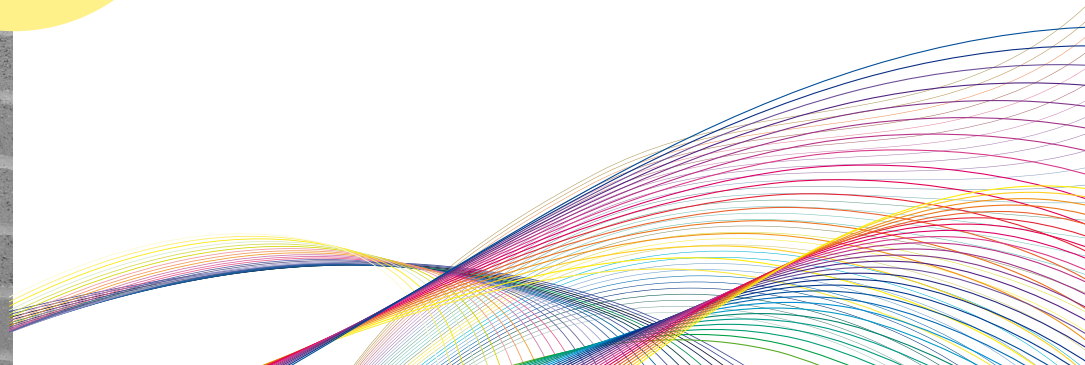
PHONE:

(402) 616-5963



E-MAIL:

jconnor@encapomaha.org





HAPPY CUSTOMERS

(402) 616-5963 | jconnor@encapomaha.org
2406 Fowler Avenue | Omaha, NE 68111

SHORT SLEEVE TEE - (men's sizing) Color Palate 1 - (100% preshrunk cotton, varies by color. See description below).

90/10
cotton,
poly
blend



50/50
cotton,
poly
blend



90/10
cotton,
poly
blend



90/10
cotton,
poly
blend



Antique Cherry Red (*heathered*)

Available sizes small - 5x
(4x currently unavailable)

Heathered Cardinal

Available sizes small - 5X
(3x currently unavailable)

Red (true red) Available sizes: small - 5x

Sport Grey (*heathered*)

Available sizes: small - 5x

Dark Heather (*heathered*) Available sizes: small - 5x



90/10
cotton,
poly
blend



50/50
cotton,
poly
blend



Metro Blue Available sizes: small - 5x

Antique Royal (*heathered*) Available sizes: small - 5x

Navy Blue Available sizes: mall - 5x

Heathered Sapphire (*heathered*) Available sizes: small - 5x

Carolina Blue Available sizes: small - 5x



Black
Available sizes small - 5x



Maroon
Available sizes small - 5x



Forest Green
Available sizes
small - 5X



Jade Dome
Available sizes: small - 5x



Kelly Green
Available sizes s - 3x
(4x, 5x unavailable)



Lime
Available sizes small - 5x



Gold
Available in sizes: small - 5x



Orange
Available sizes:
small - 4x (no 5x)



Purple
Available sizes: small - 5x



Sand
Available sizes:
small - 4x (no 5x)



White
Available sizes: small - 5x

LONG SLEEVE - (men's sizing) Color Palette 1 - (100% preshrunk cotton).

3



Ash Grey

Available sizes: small - 3x



Graphite Heather

Available sizes: small - 3x



Sport Grey

Available sizes: small - 3x



Black

Available sizes: small - 3x



Royal Blue

Available sizes: small- 3x



Carolina Blue

Available sizes: small- 3x



Navy

Available sizes: small - 3x



White

Available sizes: small - 3x

LONG SLEEVE - (men's sizing) Color Palate 2 - (100% preshrunk cotton, varies by color. See description below).



Cardinal Red

Available sizes small - 3x



Garnet

Available sizes small - 3x



Red

Available sizes small - 3x



Maroon

Available sizes small - 3x



Forest Green

Available sizes small - 3x



Irish Green

Available sizes small - 3x



Gold

Available sizes small - 3x

50/50
cotton,
poly
blend



Safety Orange

Available sizes small - 3x



Envy Green / Heather White
Available sizes: xtra small - 3x



Envy Green / Heather Grey
Available sizes: xtra small - 3x



Vintage Purple / Heather White
Available sizes: xtra small - 3x



Vintage Pink / Heather White
Available sizes: xtra small - 3x



Indigo / Heather White
Available sizes: xtra small - 3x



Vintage Red / Heather White
Available sizes: xtra small - 3x



Vintage Red / Heather Grey
Available sizes: xtra small - 3x



Vintage Red / Vintage Black
Available sizes: xtra small - 3x



Teal / Heather White
Available sizes: xtra small - 3x



**Heather Grey /
Vintage Black**

Available sizes: xtra small - 3x



**Vintage Black /
Vintage Black**

Available sizes: xtra small - 3x



**Vintage Black /
Heather Grey**

Available sizes: xtra small - 3x



**Vintage Black/
Heather White**

Available sizes: xtra small - 3x



**Heather Grey /
Heather White**

Available sizes: xtra small - 3x



**Vintage Navy /
Heather Grey**

Available sizes: xtra small - 3x



**Vintage Royal (blue) /
Heather White**

Available sizes: xtra small - 3x



**Vintage Royal (blue) /
Heather Grey**

Available sizes: xtra small - 3x



Red

Available sizes: xtra small - 3x



Cardinal

Available sizes: xtra small - 3x



Dark Grey

Available sizes: xtra small - 3x



Heather Grey

Available sizes: xtra small - 3x



Black

Available sizes: xtra small - 3x



Kelly Green

Available sizes: xtra small - 3x



Raspberry

Available sizes: xtra small - 3x



Midnight Navy

Available sizes: xtra small - 3x



Royal (blue)

Available sizes: xtra small - 3x



Turquoise

Available sizes: xtra small - 3x



**Antique Cherry Red
(heathered)**
Available sizes: small - 5x



Cardinal Red
Available sizes: small - 5x



Red
Available sizes: small - 5x



Dark Heather
Available sizes: small - 5x



Sport Grey
Available sizes: small - 5x



**Antique Sapphire
(heathered)**
Available sizes: Med - 5x



Carolina Blue
Available sizes: small - 5x



Navy Blue
Available sizes: Small- 5x



Royal (blue)
Available sizes: Small- 5x



Black
Available sizes: Small- 5x



Ash Grey

Available sizes: small - 5x



Sport Grey

Available sizes: small - 5x



Dark Heather

Available sizes: small - 5x



Cardinal Red

Available sizes: small - 5x



Red

Available sizes: small - 5x



Carolina Blue

Available sizes: small - 5x (no 4x)



Navy (blue)

Available sizes: small - 5x



Royal (blue)

Available sizes: small - 5x



Black

Available sizes: small - 5x



**Antique Cherry Red
(heathered)**

Available sizes: small - 4x (no 3x)



Red

Available sizes: small - 5x



Sport Grey

Available sizes: small - 5x



Dark Heather

Available sizes: small - 5x



Black

Available sizes: small - 5x



Carolina Blue

Available sizes: small - 5x (no 4x)



Navy (blue)

Available sizes: small - 5x



Royal (blue)

Available sizes: small - 5x



White

Available sizes: small - 5x



Black

Available sizes: xtra small - 6x



Sport Dark Navy

Available sizes: xtra small - 6x



Sport Forest Green

Available sizes: xtra small - 6x



Sport Graphite (grey)

Available sizes: xtra small - 6x



Sport Light Blue

Available sizes: xtra small - 6x



Sport Red

Available sizes: xtra small - 6x



Sport Royal (blue)

Available sizes: xtra small - 6x



White

Available sizes: xtra small - 6x



Black



Navy



Royal



Red



Forest



Teal



Orange



Yellow



Hot Pink

ACCESSORIES Canvas Tote - (100% cotton canvas tote, 14.5 x 15.5)



Black



Navy



Royal



Red



Natural

ACCESSORIES 2-pocket, 30inch Apron - (65% polyester, 35% cotton twill)



Black



Navy



Royal



Red



White



Natural (canvas)